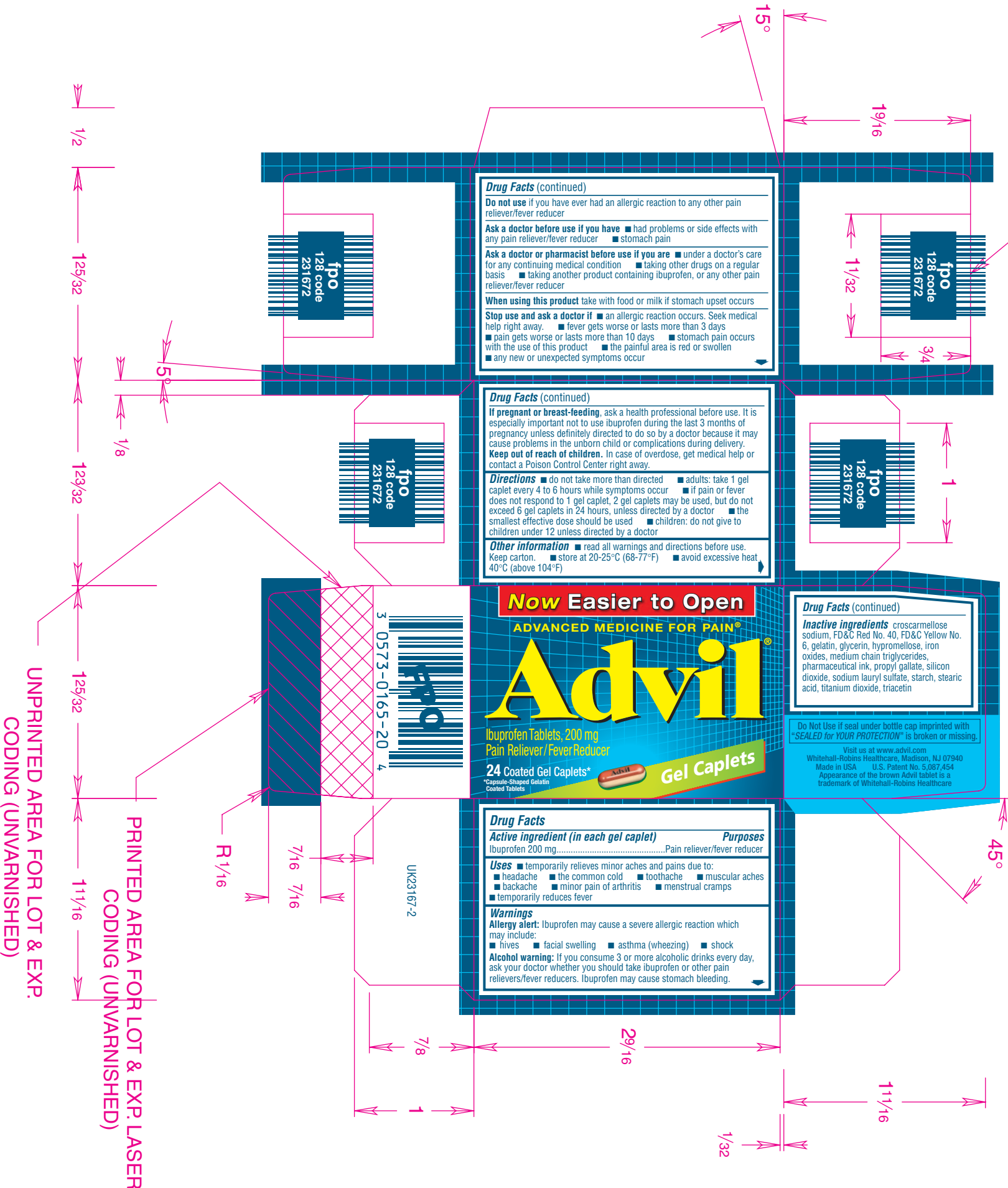


128 HD CODE AREA - SUBSET
 C 10 MIL DENSITY WITH 4
 OR 6 DIGITS (CODE TO
 EXTEND TO EDGE OF
 FLAP - UNVARNISHED)



Cartons Modified

DRUG FACTS TEXT DEFINED	TYPE SIZE
• DRUG FACTS Title	8 pt
• DRUG FACTS CONTINUED	7 pt
• HEADINGS	7 pt
• SUBHEADS/BODY TEXT	6 pt
• LEADING	6.25 pt
• # OF CHARACTERS PER INCH	<39
• BULLETS	5 pt
• SPACE AFTER BULLETED SECTION	2 ems
• BARLINES, HAIRLINES	1.5 pt, .5 pt
• SPACE BETWEEN HAIRLINES AND BOX END	2 spaces
• SMALLEST ®, TM etc.	4.5 pt

Job Information	Color Legend		
Date 06/14/02 PASS #2 Component # UK23167-2 Drawing # 5009 Rev. #3			
Identification Wyeth Consumer Healthcare Production Packaging Dept. Five Giralda Farms Madison, NJ 07940 Phone: (973) 660-5595/5153 Fax: (973) 660-6048	PROCESS BLACK	PROCESS CYAN	PANTONE 302 C
Vendor Identification 			
	PROCESS MAGENTA	PROCESS YELLOW	PANTONE 2985 C
	Printer Notes PRINTER TO REPLACE FPO UPC'S WITH HI-RES DIGITAL ART ALSO PRINTER TO SUPPLY COLOR MATCHPRINT FOR COLOR APPROVAL PRIOR TO PRESS RUN.		

DEPARTMENT	REVIEWED BY	DATE
Graphic Artist		
Packaging Engineer		
Labeling Compliance		
Medical		
Regulatory Affairs		
Legal		
Marketing		
Trademark		

RELEASED

(1) _____ Date _____

(2) _____ Date _____

DIGITAL MECHANICAL
 COLOR REPRESENTATION MAY BE OFF
 FOLLOW COLOR LEGEND FOR ACTUAL COLOR.

with
 Changes